

Indigenous Land Use Agreement

Allens < Linklaters

**Schedule 2**

**Sarum Project Area**

**Part A - Written Description**

The Sarum Project Area is bounded by the following points:

**Notes**

All bearings shown are grid. Subtract 7°16'30 for CAM bearings.

Distances shown are grid. Multiply grid distances by 1.000327 (the average combined scale factor for the subject area) for approximate ground distances.

Coordinates are MGA94 Zone 55.

**Commencement point**

The commencement point is located at the south western corner of ML10346 (JAX). The commencement point has approximate MGA coordinates of 588,597.26 East and 7,705,457.26 North.

	<u>Grid Bearing</u>		<u>Grid Distance</u>	<u>Description of line</u>		<u>E (MGA94 Zone 55)</u>	<u>N (MGA94 Zone 55)</u>
Then at	90°18'16"	For	1739.59	Abutting ML10346	To	590,336.83	7,705,448.02
Then at	0°18'24"	For	3689.31	Abutting ML10346	To	590,356.59	7,709,137.28
Then at	90°18'36"	For	1735.56	Abutting ML10346	To	592,092.12	7,709,127.89
Then at	0°18'44"	For	7378.63	Abutting part of ML10346 and EPC586	To	592,132.31	7,716,506.42
Then at	270°18'32"	For	1736.32	Abutting EPC586	To	590,396.02	7,716,515.78
Then at	0°18'20"	For	121.24	Abutting EPC639	To	590,396.67	7,716,637.02
Then at	90°0'	For	505.56	Abutting Lot 4 on SP134564	To	590,902.23	7,716,637.00
Then at	0°0'	For	641.3	Abutting Lot 4 on SP134564	To	590,902.25	7,717,278.31
Then at	315°30'	For	596.87	Abutting Lot 4 on SP134564	To	590,483.83	7,717,703.95
Then at	303°30'	For	97.36	Abutting Lot 4 on SP134564	To	590,402.65	7,717,757.70
Then at	0°18'20"	For	602.7	Abutting EPC639	To	590,405.86	7,718,360.40
Then at	90°18'31"	For	1737.83	Abutting EPC586	To	592,143.67	7,718,351.03

Indigenous Land Use Agreement

Allens & Linklaters

Then at	0°22'54"	For	137.22	Abutting EPC586	To	592,144.58	7,718,488.25
Then at	97°15'45"	For	1747.86	Abutting Lot 25 on SP190745	To	593,878.42	7,718,267.30
Then at	180°19'03"	For	3615.11	Abutting EPC1708	To	593,858.38	7,714,652.24
Then at	90°19'15"	For	1736.14	Abutting EPC1708	To	595,594.50	7,714,642.52
Then at	155°26'33"	For	1447.55		To	596,196.11	7,713,325.90
Then at	155°57'21"	For	1807.74		To	596,932.65	7,711,675.02
Then at	162°15'45"	For	808.65		To	597,179.01	7,710,904.81
Then at	136°10'30"	For	228.83		To	597,337.46	7,710,739.72
Then at	159°53'45"	For	609.11	Abutting ML1075	To	597,546.83	7,710,167.72
Then at	69°00'00"	For	265.82	Abutting ML1075	To	597,795.02	7,710,262.92
Then at	136°10'31"	For	6770.18	To the NE corner of EPC734	To	602,483.07	7,705,378.51
Then at	270°20'43"	For	1735.24	Abutting EPC734	To	600,747.86	7,705,388.97
Then at	180°20'34"	For	7378.83	Abutting EPC734	To	600,703.71	7,698,010.27
Then at	270°20'16"	For	3468.91	Abutting EPC1211 and EPC734	To	597,234.85	7,698,030.72
Then at	270°19'33"	For	3468.88	Abutting EPC734	To	593,766.03	7,698,050.45
Then at	270°18'50"	For	3468.85	Abutting EPC734	To	590,297.23	7,698,069.46
Then at	270°18'11"	For	2661.62	Abutting EPC734 and EPC586	To	587,635.64	7,698,083.54
Then at	351°07'00"	For	1972.21	Abutting the Bowen Developmental Road	To	587,331.06	7,700,032.09
Then at	358°50'15"	For	163.23	Abutting the Bowen Developmental Road	To	587,327.75	7,700,195.29
Then at	6°02'00"	For	213.76	Abutting the Bowen Developmental Road	To	587,350.22	7,700,407.86
Then at	13°00'35"	For	3104.41	Abutting the Bowen Developmental Road	To	588,049.08	7,703,432.59

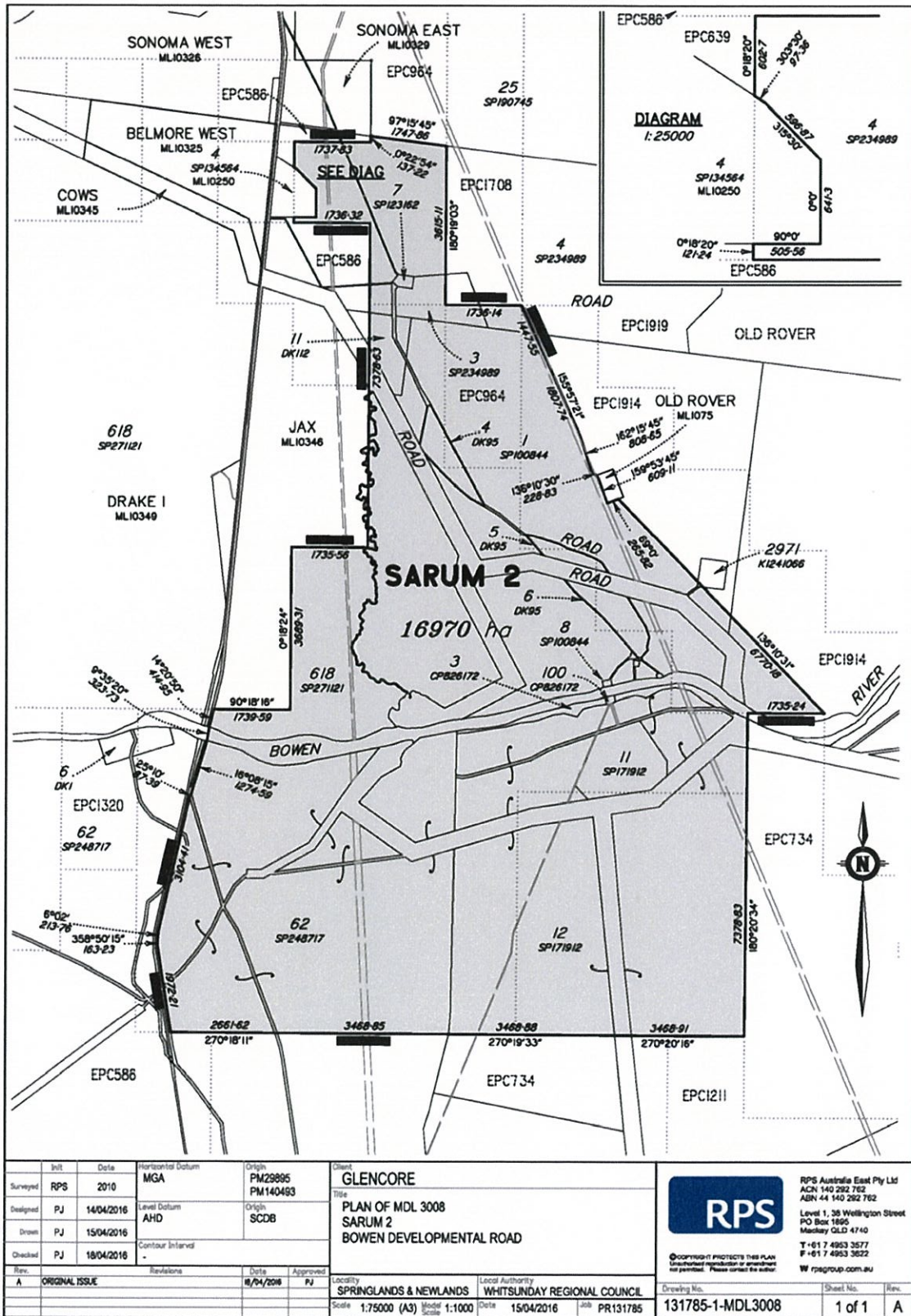
Indigenous Land Use Agreement

Allens < Linklaters

Then at	25°10'00"	For	87.39	Abutting the Bowen Developmental Road	To	588,086.25	7,703,511.68
Then at	16°08'15"	For	1274.59	Abutting the Bowen Developmental Road	To	588,440.51	7,704,736.05
Then at	9°35'20"	For	323.73	Across the Bowen River	To	588,494.44	7,705,055.25
Then at	14°20'50"	For	414.95	Abutting the Bowen Developmental Road	To	588,597.26	7,705,457.26

Indigenous Land Use Agreement

Part B - Plan



Init	Date	Horizontal Datum	Origin	Client
Surveyed	RPS	2010	MGA	PM29895 PM140493
Designed	PJ	14/04/2016	Level Datum	Origin
Drawn	PJ	15/04/2016	AHD	SCDB
Checked	PJ	18/04/2016	Contour Interval	
Rev.		Revisions	Date	Approved
A	ORIGINAL ISSUE		18/04/2016	PJ
Title		Client		
PLAN OF MDL 3008 SARUM 2 BOWEN DEVELOPMENTAL ROAD		GLENCORE		
Scale		Local Authority		
1:75000 (A3) Model Scale 1:1000		SPRINGLANDS & NEWLANDS WHITSUNDAY REGIONAL COUNCIL		
Date		Job		
15/04/2016		PR131785		
Drawing No.		Sheet No.		
131785-1-MDL3008		1 of 1		
Rev.		A		

**RPS**  
 RPS Australia East Pty Ltd  
 ACN 140 292 762  
 ABN 44 140 292 762  
 Level 1, 38 Wellington Street  
 PO Box 1666  
 Mackay QLD 4740  
 T +61 7 4953 3577  
 F +61 7 4953 3622  
 W rpsgroup.com.au